

Action Targets



Device: [Attack Target](#)

Manufacture: [MGM Targets](#)

Quantity: 1

Stored: Conex 2

Action: The target travels down the track in less than 2 seconds.

Setup Notes: Target may be mounted in the trolley parallel or perpendicular to the track. For set-up assistance contact the equipment manager. *Do not place any weights on the trolley because it will cause damage to the driving mechanism.*



Device: [Bobber Target](#)

Manufacture: [Range Master Steel](#)

Quantity: 1

Stored: Conex 2

Action: Target moves up and down once or can swing up and down several times.

Setup Notes: Adjust main weights and counterbalance weight to obtain desired results.



Device: [Double Swinger](#)

Manufacture: [NEVCO Targets](#)

Quantity: 1

Stored: Conex 2

Action: The targets swing back and forth.

Setup Notes: Weights can be adjusted on targets to vary the rate of swing. There is a custom post designed for the prop, shown in picture.



Device: Drop Out Target

Quantity: 2

Stored: Conex 2

Action: Target falls to the side.

Setup Notes: The swing arm can be adjusted to different heights.



Device: [Dropper](#)

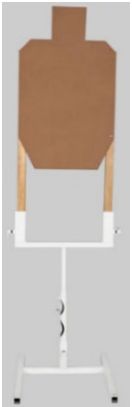
Manufacture: [NEVCO Targets](#)

Quantity: 2

Stored: Conex 2

Action: The target will expose itself once or can remain in the upright position.

Setup Notes: Weights can be adjusted for different rates of exposure.



Device: [Drop Turner Cardboard Target](#)

Manufacture: [MGM Targets](#)

Quantity: 4

Stored: Conex 2

Action: The target is exposed once or twice.

Setup Notes: There are two spots for a pin to be placed in the unit. One for a single exposure or a double exposure.



Device: [Full Size Swinger](#)

Manufacture: [GT Target Stands](#)

Quantity: 2

Stored: Conex 2

Action: The target will swing back and forth.

Setup Notes: Adjust the weight to change the rate of swing.



Device: [Gravity Turning Target Stand](#)

Manufacture: [GT Target Stands](#)

Quantity: 1

Stored: Conex 2

Action: The target turns, exposed once for a second or two then disappears.

Setup Notes: There is a measured activator stick with a loop at the bottom to attach the activator cable. The best practice is to place the measured activator stick loop on the bottom. The top of the stick should be placed below the edge of the weight and the bottom of the stick resting on the metal of the unit for an easier pull.



Device: [“Holy Monkey” Swinger Kit](#)

Manufacture: [Targets USA](#)

Quantity: 1

Stored: Conex 2

Action: The target swings from two access points.

Setup Notes: Place an AR500 plate in front to protect the mechanism.



Device: [Mini Swinger – Wiggler Target Stand](#)

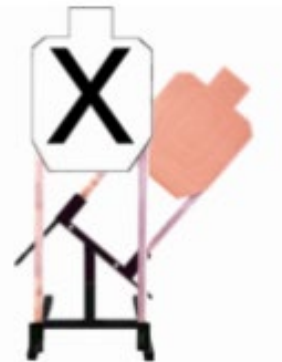
Manufacture: [GT Target Stands](#)

Quantity: 1

Stored: Conex 2

Action: The target swings, waggles, or just drops to a side.

Setup Notes: Adjust the weight to change the rate of swing, waggle or drop.



Device: [Out and Back Target Stand](#)

Manufacture: [GT Target Stands](#)

Quantity: 2

Stored: Conex 2

Action: The target swings out and then back. It can be set to just swing out.

Setup Notes: Adjust weights to change the rate of movement.



Device: [Snapper Target](#)

Manufacture: [MGM Targets](#)

Quantity: 2

Stored: Conex 2

Action: The device will pop up the rear target then pop up the front target. It can be configured to have one of the targets pop up.

Setup Notes: Target sticks can only be 4' in height max or the device will not 'snap' close.



Device: [Swinger Target](#)

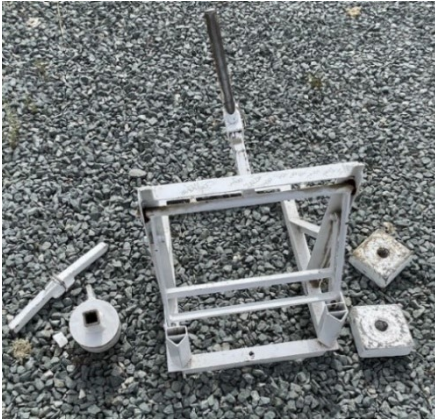
Manufacture: [MGM Targets](#)

Quantity: 6

Stored: Conex 2

Action: The target will swing back and forth.

Setup Notes: Adjust the weight to change the rate of swing. There is a loop placed on the hammer to allow another device to be activated.



Device: Up/Down Target

Quantity: 1

Stored: Conex 2

Action: Target moves up and down once or can swing up and down several times.

Setup Notes: The kettle weight is for repetitive up and down. Free weights are for one up and down. There is an orange bucket with small wood planks to be used as a cross beam to support the head of the cardboard target. They can be stapled to the vertical posts.



Device: Zip Line Target

Quantity: 2

Stored: Conex 2

Action: Target moves right to left across the bay when activated.

Setup Notes: Zip line must be attached to the cement blocks on bay 5. Power source is pulling wheel. The best length for the target sticks are 4 feet. Bungee is attached on the other side to slow trolley down.



Device: [Max Trap](#)

Manufacture: [Range Master Steel LLC](#)

Quantity: 2

Stored: Conex 2

Action: When activated a non-threat target will flip down allowing a view of a threat target then the non-threat will once again block the threat target.

Setup Notes: Setup non-threat in front of the threat target and adjust weights as needed.

Static Targets



Device: [Cardboard Target Stand 45°](#)

Manufacture: [MGM Targets](#), (Home made)

Quantity: 3 MGM, (5 homemade wooden versions)

Stored: MGM in Conex 2, Homemade in Conex 3

Target - Accessories



Device: Double Target holder

Quantity: 1

Stored: Conex 2

Action: Holds two targets.

Setup Notes: Can be used in any device except the "Up/Down Target" that holds a paper target.

Poppers



Device: 8" Popper

Manufacture: Big Johns Iron Works

Quantity: 7

Stored: Conex 2

Action: Plate will fall and remain down.

Setup Notes: Height of target depends on size of post used.



Device: 8" Plate

Quantity: 7

Stored: Conex 1

Setup Notes: Posts are in Conex 1.



Device: Pepper Popper 28”

Quantity: 7

Stored: Conex 1

Action: The target falls backwards.

Setup Notes: Adjust bolt at base of popper to allow for ease of fall.



Device: Pepper Popper 28” (hinged)

Quantity: 7

Stored: Conex 1

Action: The target falls backwards.

Setup Notes: Adjust bolt at base of popper to allow for ease of fall.



Device: [Pepper Popper 42”](#)

Manufacture: [MGM Targets](#)

Quantity: 6

Stored: Conex 1

Action: Targets fall forwards.

Setup Notes: Adjust bolt at base of popper to allow for ease of fall.

Notes: The poppers have a loop on the face of the metal plate to attach an activator cable.



Device: Pepper Popper 42”

Quantity: 3

Stored: Conex 1

Action: Targets fall backwards.

Setup Notes: Adjust bolt at base of popper to allow for ease of fall.

Notes: One of the poppers has a loop on the face of the metal plate to attach an activator cable.

Popper - Accessories



Device: [Cardboard Target Pop Up Bracket](#)

Manufacture: [MGM Targets](#)

Quantity: 1

Stored: Conex 1

Action: Once the metal popper is knocked down a paper target will pop up to be addressed.

Setup Notes: This device will only work with the [Pepper Popper 42”](#).

Props



Device: Bianca Wall

Quantity: 6

Stored: On the south side of Conex 2



Device: Ported Wall (8ft x 6ft)

Quantity: 6

Stored: Conex 3

Action: 18in x 24in port opens outward. Opening the window can activate another prop.

Setup Notes: Just like a regular wall



Device: Door

Quantity: 1

Stored: Infront of Conex 2

Action: Opens outward from the left-hand side.

Setup Notes: There are mount points on both sides of the door to attach to walls.



Device: Mailbox

Quantity: 1

Stored: Infront of Conex 2

Action: Opening the mail door can be used to activate a prop.



Device: Shopping Cart

Quantity: 1

Stored: Infront of Conex 2

Action: Can be used to activate a prop.

Activators



Device: ["Bigfoot" Stomp Plate](#)

Manufacture: [USA Targets](#)

Quantity: 2

Stored: Conex 2

Action: Device will pull cable when stepped on.

Setup Notes: Pins on sides will come out from time to time.



Device: [Release Activator Pedal](#)

Manufacture: [USA Targets](#)

Quantity: 2

Stored: Conex 2

Action: Device will pull cable when shooter steps off.

Setup Notes: There is a safety pin on the side.



Device: [Manny Stomp Pad](#)

Manufacture: [Manny Bragg](#)

Quantity: 1

Stored: Conex 2

Action: Device will pull cable when stepped on.



Device: [Pressure Plate Target Activator](#)

Manufacture: [MGM Targets](#)

Quantity: 3 “Step-On” and 1 “Step-Off”

Stored: Conex 2

Action: The “Step-On” will activate an item if it is stepped on. The “Step-Off” will activate after the user has stepped off the device.

Setup Notes: Place cables on the rods to pull the cable to activate devices.

Protection Devices



Device: 18x24 AR Plates

Quantity: 8

Stored: Conex 2

Action: Used to protect props or decrease the view of targets.

Setup Notes: Height of target depends on size of post used. This rated at A36 steel.



Device: [18x24 Steel Challenge AR Target](#),

Manufacture: [ar500 Target Solutions](#)

Quantity: 2

Stored: Conex 2

Action: Used to protect props or decrease the view of targets.

Setup Notes: Height of target depends on size of post used. This is rated at AR500 steel.



Device: Bullet Trap (45° angle)

Quantity: 4 traps, 3 wood frames

Stored: Trap in Conex 2, Wood frame in Conex 3

Action: Used to protect shooters from ricochets when shooting at that angle.

Setup Notes: Target should be attached to sticks and placed in lower slats.



Device: Tires

Quantity: 15 or so...

Stored: Infront of Conex 2

Action: Used to protect props or decrease the view of targets.

Protection Device - Accessories



Device: [Full Target Stand w/ Target Lok System-2x4](#)

Manufacture: [ar500 Target Solutions](#)

Quantity: 8

Stored: Conex 2

Action: Used to hold the 18x24 AR Plates and 18x24 Steel Challenge AR Targets.