

# SDPS Prop Inventory

Updated 2/7/2025

## Action Targets



**Device:** [Attack Target](#)

**Manufacture:** [MGM Targets](#)

**Quantity:** 1

**Stored:** Conex 2

**Action:** The target travels down the track in less than 2 seconds.

**Setup Notes:** Target may be mounted in the trolley parallel or perpendicular to the track. For set-up assistance contact the equipment manager. *Do not place any weights on the trolley because it will cause damage to the driving mechanism.*



**Device:** [Bobber Target](#)

**Manufacture:** [Range Master Steel](#)

**Quantity:** 1

**Stored:** Conex 2

**Action:** Target moves up and down once or can swing up and down several times.

**Setup Notes:** Adjust main weights and counterbalance weight to obtain desired results.



**Device:** [Double Swinger](#)

**Manufacture:** [NEVCO Targets](#)

**Quantity:** 1

**Stored:** Conex 2

**Action:** The targets swing back and forth.

**Setup Notes:** Weights can be adjusted on targets to vary the rate of swing. There is a custom post designed for the prop, shown in picture.



**Device:** Drop Out Target

**Quantity:** 2

**Stored:** Conex 2

**Action:** Target falls to the side.

**Setup Notes:** The swing arm can be adjusted to different heights.



**Device:** [Dropper](#)

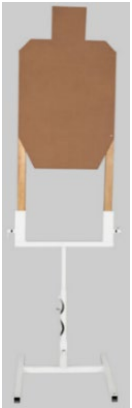
**Manufacture:** [NEVCO Targets](#)

**Quantity:** 2

**Stored:** Conex 2

**Action:** The target will expose itself once or can remain in the upright position.

**Setup Notes:** Weights can be adjusted for different rates of exposure.



**Device:** [Drop Turner Cardboard Target](#)

**Manufacture:** [MGM Targets](#)

**Quantity:** 4

**Stored:** Conex 2

**Action:** The target is exposed once or twice.

**Setup Notes:** There are two spots for a pin to be placed in the unit. One for a single exposure or a double exposure.



**Device:** [Full Size Swinger](#)

**Manufacture:** [GT Target Stands](#)

**Quantity:** 2

**Stored:** Conex 2

**Action:** The target will swing back and forth.

**Setup Notes:** Adjust the weight to change the rate of swing.



**Device:** [Gravity Turning Target Stand](#)

**Manufacture:** [GT Target Stands](#)

**Quantity:** 1

**Stored:** Conex 2

**Action:** The target turns, exposed once for a second or two then disappears.

**Setup Notes:** There is a measured activator stick with a loop at the bottom to attach the activator cable. The best practice is to place the measured activator stick loop on the bottom. The top of the stick should be placed below the edge of the weight and the bottom of the stick resting on the metal of the unit for an easier pull.



**Device:** [“Holy Monkey” Swinger Kit](#)

**Manufacture:** [Targets USA](#)

**Quantity:** 1

**Stored:** Conex 2

**Action:** The target swings from two access points.

**Setup Notes:** Place an AR500 plate in front to protect the mechanism.



**Device:** [Mini Swinger – Wiggler Target Stand](#)

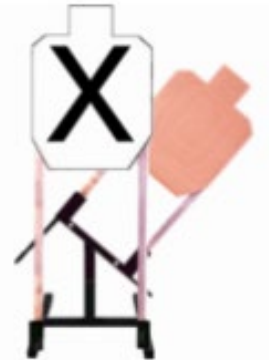
**Manufacture:** [GT Target Stands](#)

**Quantity:** 1

**Stored:** Conex 2

**Action:** The target swings, waggles, or just drops to a side.

**Setup Notes:** Adjust the weight to change the rate of swing, waggle or drop.



**Device:** [Out and Back Target Stand](#)

**Manufacture:** [GT Target Stands](#)

**Quantity:** 2

**Stored:** Conex 2

**Action:** The target swings out and then back. It can be set to just swing out.

**Setup Notes:** Adjust weights to change the rate of movement.



**Device:** [Snapper Target](#)

**Manufacture:** [MGM Targets](#)

**Quantity:** 2

**Stored:** Conex 2

**Action:** The device will pop up the rear target then pop up the front target. It can be configured to have one of the targets pop up.

**Setup Notes:** Target sticks can only be 4' in height max or the device will not 'snap' close.



**Device:** [Swinger Target](#)

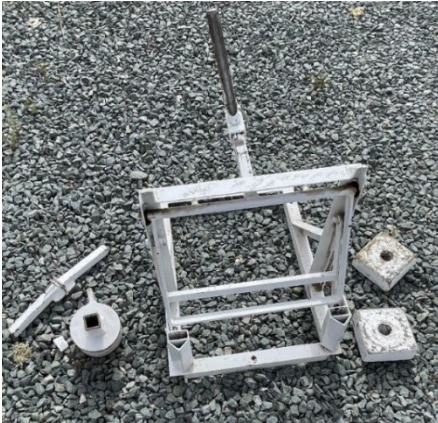
**Manufacture:** [MGM Targets](#)

**Quantity:** 6

**Stored:** Conex 2

**Action:** The target will swing back and forth.

**Setup Notes:** Adjust the weight to change the rate of swing. There is a loop placed on the hammer to allow another device to be activated.



**Device:** Up/Down Target

**Quantity:** 1

**Stored:** Conex 2

**Action:** Target moves up and down once or can swing up and down several times.

**Setup Notes:** The kettle weight is for repetitive up and down. Free weights are for one up and down. There is an orange bucket with small wood planks to be used as a cross beam to support the head of the cardboard target. They can be stapled to the vertical posts.

## Static Targets

---



**Device:** [Cardboard Target Stand 45°](#)

**Manufacture:** [MGM Targets](#), (Home made)

**Quantity:** 3 MGM, (5 homemade wooden versions)

**Stored:** Conex 2

## Target - Accessories

---



**Device:** Double Target holder

**Quantity:** 1

**Stored:** Conex 2

**Action:** Holds two targets.

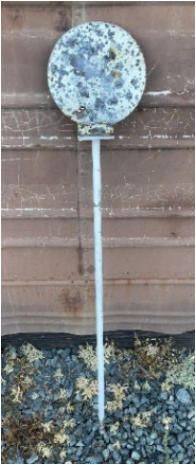
**Setup Notes:** Can be used in any device except the "Up/Down Target" that holds a paper target.

# Poppers

---



**Device:** 8" Popper  
**Manufacture:** Big Johns Iron Works  
**Quantity:** 7  
**Stored:** Conex 2  
**Action:** Plate will fall and remain down.  
**Setup Notes:** Height of target depends on size of post used.



**Device:** 8" Plate  
**Quantity:** 7  
**Stored:** Conex 1  
**Setup Notes:** Posts are in Conex 1.



**Device:** Pepper Popper 28"  
**Quantity:** 6  
**Stored:** Conex 1  
**Action:** The target falls backwards.  
**Setup Notes:** Adjust bolt at base of popper to allow for ease of fall.



**Device:** Pepper Popper 28" (hinged)  
**Quantity:** 8  
**Stored:** Conex 1  
**Action:** The target falls backwards.  
**Setup Notes:** Adjust bolt at base of popper to allow for ease of fall.



**Device:** [Pepper Popper 42"](#)

**Manufacture:** [MGM Targets](#)

**Quantity:** 8 (4 are MGM and the other 4 are different manufactures)

**Stored:** Conex 1

**Action:** All target falls backwards except for 2 MGM targets that fall forward.

**Setup Notes:** Adjust bolt at base of popper to allow for ease of fall.

## Popper - Accessories

---



**Device:** [Cardboard Target Pop Up Bracket](#)

**Manufacture:** [MGM Targets](#)

**Quantity:** 1

**Stored:** Conex 1

**Action:** Once the metal popper is knocked down a paper target will pop up to be addressed.

**Setup Notes:** This device will only work with the [Pepper Popper 42"](#).

## Props

---



**Device:** Bianca Wall

**Quantity:** 6

**Stored:** On the south side of Conex 2



**Device:** Door

**Quantity:** 1

**Stored:** Infront of Conex 2

**Action:** Opens outward from the left-hand side.

**Setup Notes:** There are mount points on both sides of the door to attach to walls.



**Device:** Mailbox

**Quantity:** 1

**Stored:** Infront of Conex 2

**Action:** Opening the mail door can be used to activate a prop.



**Device:** Shopping Cart

**Quantity:** 1

**Stored:** Infront of Conex 2

**Action:** Can be used to activate a prop.

## Activators

---



**Device:** ["Bigfoot" Stomp Plate](#)

**Manufacture:** [USA Targets](#)

**Quantity:** 2

**Stored:** Conex 2

**Action:** Device will pull cable when stepped on.

**Setup Notes:** Pins on sides will come out from time to time.



**Device:** [Manny Stomp Pad](#)

**Manufacture:** [Manny Bragg](#)

**Quantity:** 1

**Stored:** Conex 2

**Action:** Device will pull cable when stepped on.



**Device:** [Pressure Plate Target Activator](#)

**Manufacture:** [MGM Targets](#)

**Quantity:** 3 “Step-On” and 1 “Step-Off”

**Stored:** Conex 2

**Action:** The “Step-On” will activate an item if it is stepped on. The “Step-Off” will activate after the user has stepped off the device.

**Setup Notes:** Place cables on the rods to pull the cable to activate devices.

## Protection Devices



**Device:** 18x24 AR Plates

**Quantity:** 8

**Stored:** Conex 2

**Action:** Used to protect props or decrease the view of targets.

**Setup Notes:** Height of target depends on size of post used. This rated at A36 steel.



**Device:** [18x24 Steel Challenge AR Target](#),

**Manufacture:** [ar500 Target Solutions](#)

**Quantity:** 2

**Stored:** Conex 2

**Action:** Used to protect props or decrease the view of targets.

**Setup Notes:** Height of target depends on size of post used. This is rated at AR500 steel.



**Device:** Tires

**Quantity:** 15 or so...

**Stored:** Infront of Conex 2

**Action:** Used to protect props or decrease the view of targets.



## Protection Device - Accessories

---



**Device:** [Full Target Stand w/ Target Lok System-2x4](#)

**Manufacture:** [ar500 Target Solutions](#)

**Quantity:** 8

**Stored:** Conex 2

**Action:** Used to hold the 18x24 AR Plates and 18x24 Steel Challenge AR Targets.

## Coming Soon

---



**Device:** Zip Line Target

**Quantity:** 2

**Stored:** Conex 2

**Action:** Target moves across the zip line.